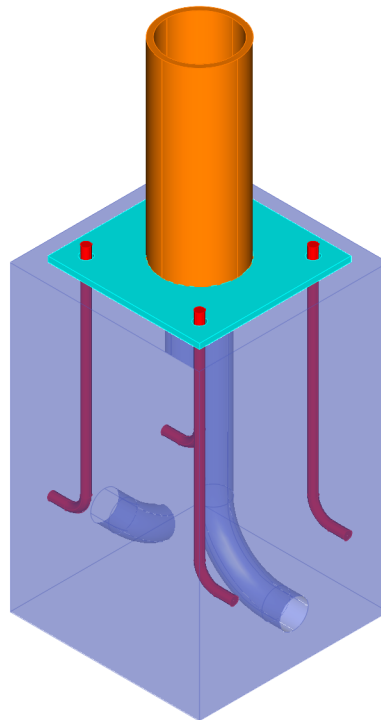
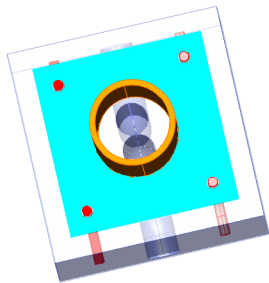
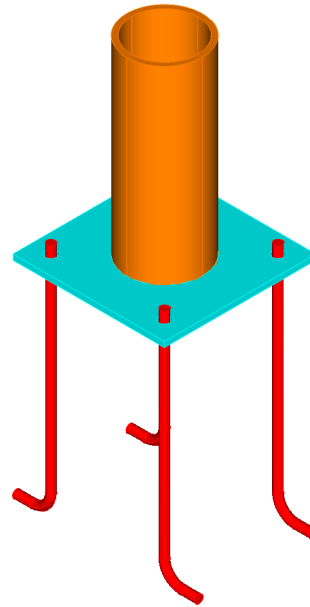
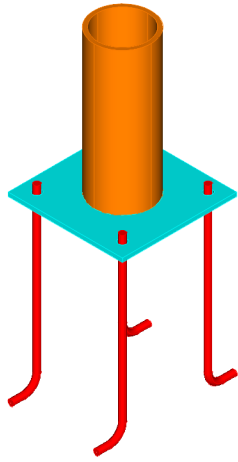


		DIMENSÕES (m)							
		Ø	a	b	c	d	e	f	g
colunas	8m	0.020	0.012	0.25	0.33	0.60	0.90	0.40	0.65
	10m	0.020	0.014	0.29	0.40	0.70	0.90	0.50	0.65
	12m	0.025	0.016	0.29	0.40	0.80	0.90	0.50	0.65



E:\DMSM2011\INFRE\Projecto\desenv\JG	DISTRIBUIÇÃO SANTA MARIA e SÃO MIGUEL INFRAESTRUTURAS DE REDE			ARQUIVO:	
	OBRA: MACIÇO PARA COLUNA TRONCOCÓNICA COM FLANGE			ESCALA: 1 : 10	
	TOPÓGRAFO:	O DESENHOR: pbettenc	O PROJECTISTA:	O ENGENHEIRO:	DATA: 05 Novembro 2002
	DESIGNAÇÃO: Pormenores de execução			NÚMERO:	